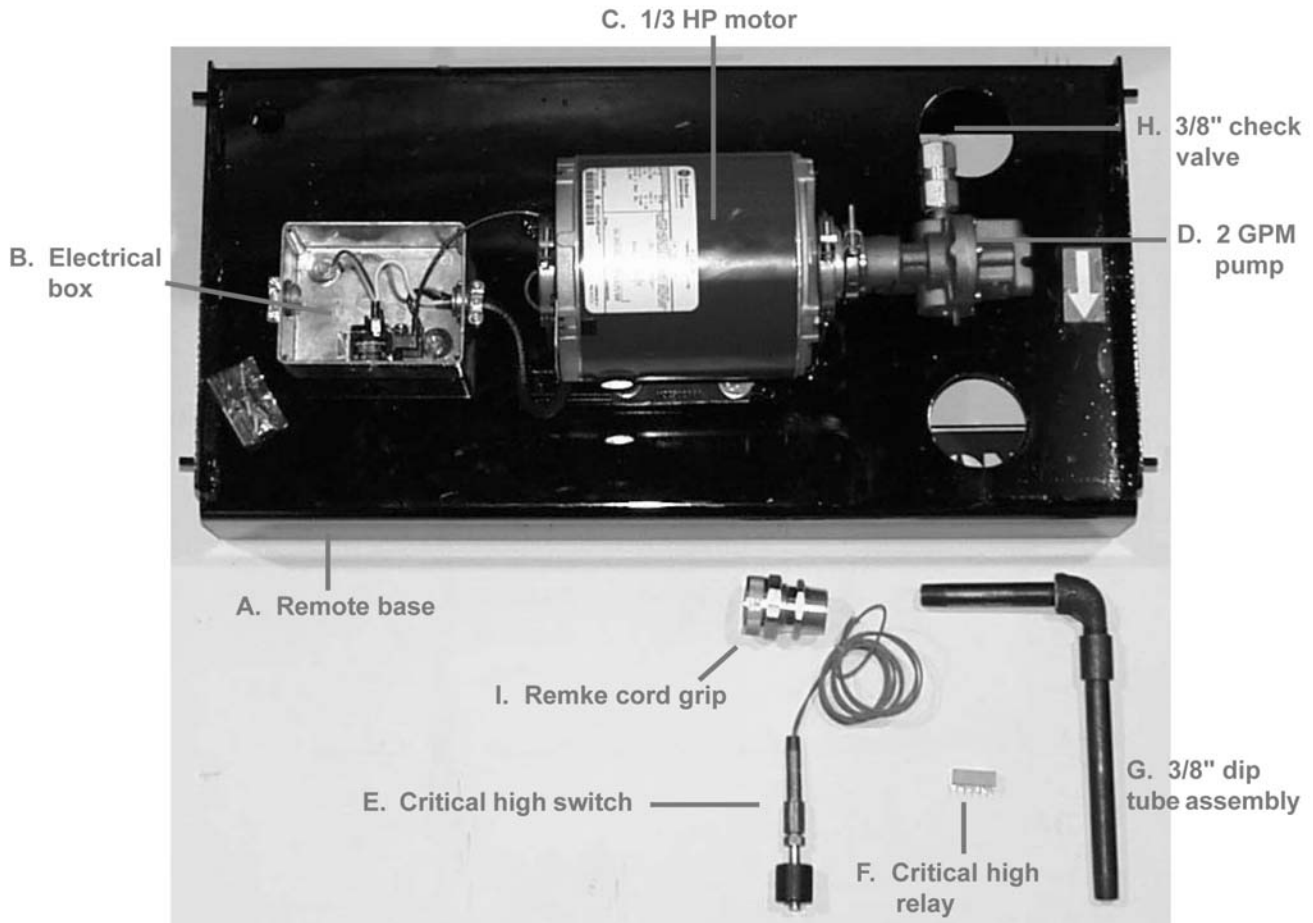


Installation: Reverse Pumping System Installation



Tramont Corporation
3701 N. Humboldt Blvd.
Milwaukee, WI 53212
Ph: 414.967.8800
Fx: 414.967.8811
www.tramont.com

IMPORTANT:
Retrofit instructions for Day Tank.



The parts listed to the right are standard in Reverse Pumping System retrofit kit (part #215410) (See Illustration Above)

- A. Remote base with poly cover for standard pump and motor (Note: If non-standard pumps and/or motors are requested a special dimension, steel cover may be required).
- B. Electrical box and 20 amp motor control relax
- C. 1/3 HP, 1 phase, 60 Hz motor
- D. 2 GPM pump
- E. Critical high fuel level switch
- F. Critical high relay
- G. 3/8" dip tube
- H. 3/8" check valve
- I. Remke cord grip

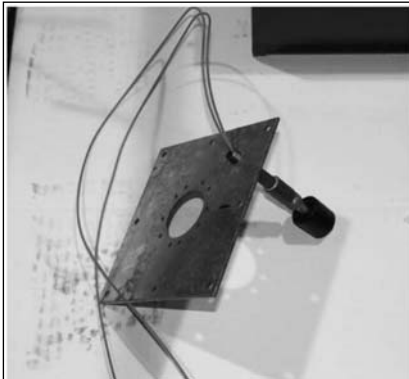
Installation: Reverse Pumping System Installation



Tramont Corporation
3701 N. Humboldt Blvd.
Milwaukee, WI 53212
Ph: 414.967.8800
Fx: 414.967.8811
www.tramont.com

Critical high level float switch installation

1. Disconnect power to the Electronic Control Module (ECM).
2. Remove the cover from the existing day tank exposing the ECM.
3. Remove the (4) screws from the top of the ECM that secure the metal cover.
4. Remove the (4) 1/4-20 nuts that secure the ECM to the tank.
5. Disconnect the (2) wires from the ECM that connect to the fuel sender. Red wire is connected to center post, black wire to mounting flange.



#2
Inspection
plate w/ float
switch

6. Remove the (8) #10 x 3/4 self-tapping screws that secure the galvanized inspection port plate to the tank.
7. With the inspection port plate removed from the tank, drill a 5/16" hole into the plate area that will not cause interference with the float sender or tank. **See detail #2.**
8. Tap threads into the hole with a 1/8" pipe tap. **See detail #2.**
9. Screw the critical high level float switch with coupling and nipple into the tapped hole. The wires from the float should extend out of the top of the plate. **See detail #2.**

10. Secure the galvanized inspection port plate back to the tank using the (8) #10 x 3/4 screws previously removed.



#3 Wires
through
bottom of
ECM

11. Reconnect the (2) wires from the ECM to the float sensor. Remember to connect the wires to the same spot from which they were removed in step 4 earlier.
12. Run the (2) wires from the critical high float through the bottom of the ECM. **See detail #3.**
13. Secure the ECM to the tank using the (4) 1/4"-20 nuts previously removed.



#4 Attach
(2) wires
from
critical
high float
switch

14. Attach the (2) wires from the critical high level float into terminals J4 (3) and J4 (4). Terminals (3) and (4) are the terminals marked on the back of the ECM as "critical high." **See detail #4.**

Installation: Reverse Pumping System Installation



Tramont Corporation
3701 N. Humboldt Blvd.
Milwaukee, WI 53212
Ph: 414.967.8800
Fx: 414.967.8811
www.tramont.com

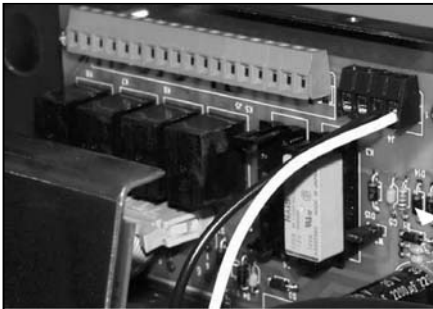
15. Insert the relay into relay socket K3. Be sure to position the relay as shown on the silkscreen under the relay socket.

See detail #5.



**#5 Install
critical
high relay**

16. Remove the black plastic jumper that is just to the right of the relay previously installed. This jumper slides off (2) pins which enables the critical high option. **See detail #6.**



**#6
Remove
jumper**

17. Do not replace the ECM cover at this point, as additional electrical connections are required.

Dip tube installation

1. The dip tube assembly consists of a 3/8" x 3-1/2" nipple connected to the female end of a 3/8" 90-degree street elbow. The male end of the street elbow connects to a 3/8" full coupling, which then connects to a 3/8" x 6" nipple. **See detail #8.**

#8 Installing dip tube assembly



2. Unscrew the tightening cap from the cord grip and remove the rubber grommet.
3. Slide the male threaded piece of the cord grip assembly over the 3-1/2" nipple end of the dip tube. The 1" NPT threaded end should be towards the street elbow.
4. Slide the rubber grommet (smaller end first) over the 3-1/2" nipple end of the dip tube.
5. Insert the dip tube into a 1" NPT fitting on the side of the tank near the top, labeled overflow. (On single wall tanks only, it may be preferable to use the fuel return fitting for the dip tube, and run the fuel return into the auxiliary fuel return fitting). Insert the end of the 6" nipple first.
6. Apply Teflon sealant to the 1" NPT end of the cord grip, and fasten into the 1" NPT fitting selected.
7. Holding the dip tube in place so that the 6" nipple inside the tank points downward, tighten down the cord grip cap securely over the rubber grommet so that the dip tube is solidly in place.
8. Plumb from the dip tube to the fuel inlet side of the 2 GPM pump on the remote base.

Installation: Reverse Pumping System Installation



Tramont Corporation
3701 N. Humboldt Blvd.
Milwaukee, WI 53212
Ph: 414.967.8800
Fx: 414.967.8811
www.tramont.com

Electrical wiring

1. In the ECM, jumper an 18 gauge black wire from terminal block #P201 (J1, line) to terminal block #P205(1). P205(1) is the critical high option (COM) terminal. **See Detail #9**



#9 Wires to terminal block

2. (4) 16 gauge wires need to be run from the ECM to the remote base. The wires should be four different colors: black, white, green, red.

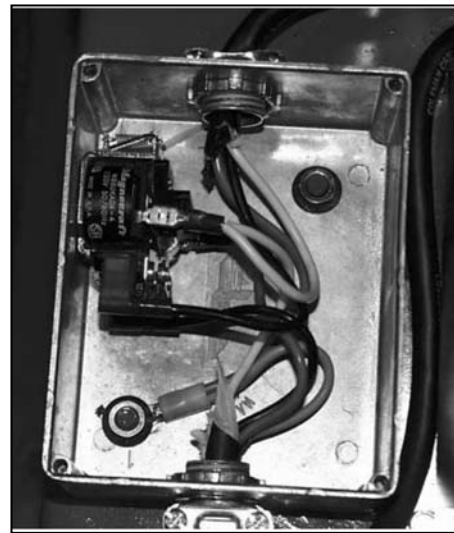


#10 Connect four wires

3. At the ECM, the (4) wires should be connected as follows: Black to P201 (line); white to P201 (neutral); green to P201 (ground); and red to P205(2). P205(2) is the critical high option (N.C.) terminal. **See Detail #10**

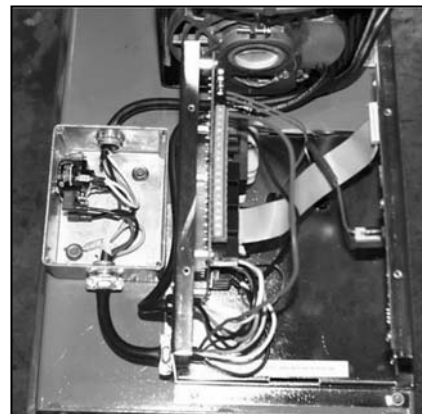
4. At the remote base the other ends of the (4) wires should be connected inside the electrical box attached to the base as follows: Black to the relay power input

contact; Red to the power input to the relay coil; white to the relay coil neutral and motor neutral; green to the chassis ground. **See Detail #11**



#11 Bud box

5. At this point the retrofit assembly should be complete. The ECM can now be reassembled. Ensure that all plumbing and electrical connections are secure. With all items properly installed, a critical high level condition will now activate the reverse pump. **See Detail #12**



#12 Completed installation