



KMI Walkway

***A cost effective,
safe and convenient
alternative to ladders
and steps***



**Building *Your*
Innovative Solutions**

Step up to the KM Walkway

Every project has taught us something and has provided us with the insight for our next generation of standard product programs. Listening to our distributor customers and learning what they need led Tramont to the development of the KM Walkway. Your customers must perform basic gen-set review and the KM Walkway offers a cost effective, safe and convenient alternative to ladders and step stools. The corrosion resistant design features all aluminum hand rails with supports, galvanized steel tread plates, formed steel powder-baked frame with cantilever truss support structure and stainless steel installation hardware.



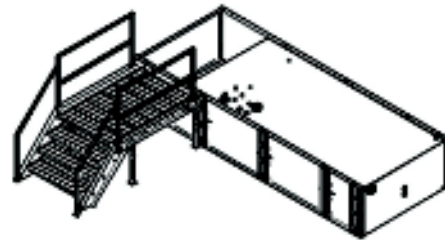
Staircase

This is a simple staircase designed to provide access to elevated control panels, etc. It is not recommended for access to doors that open out away from the enclosure with no alternate place to stand. *If staircase is installed in front of a door, it is non-osh compliant.

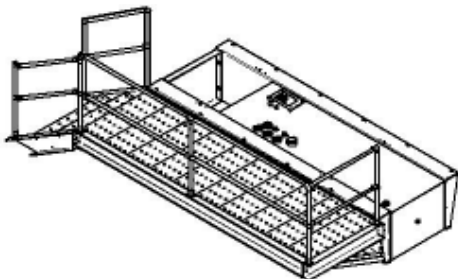
Option #KMS

Platform

This is a standard staircase with a supported platform attached. This is designed to provide access to elevated doors and allows ample room to open and close outward swinging doors.



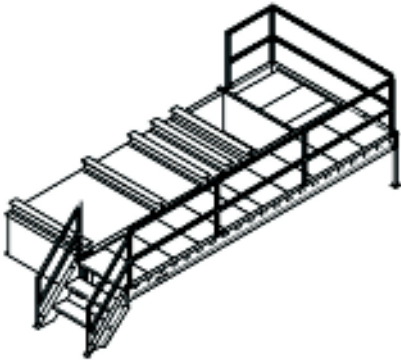
Option #KMP



Walkway

This is a standard walkway utilizing a cantilevered truss, resulting in a self-supporting design. It allows access to all doors on one side of an enclosure.

Option #KMW



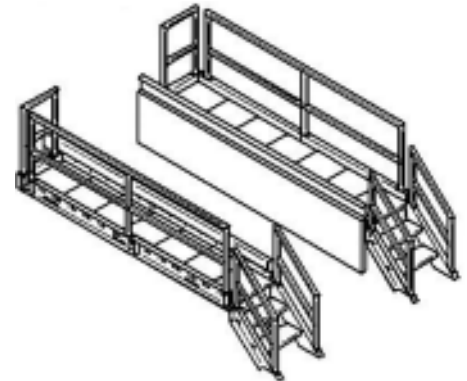
Corner Walkway

This walkway wraps around the back of the enclosure. It allows access to all doors on one side and one end of the enclosure. The design will depend on the tank/enclosure interface, but may require adjustable drop down supports (provided).

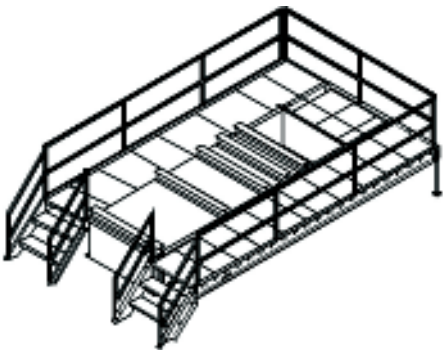
Option #KMC

Dual Walkway

This is a dual walkway utilizing a cantilevered truss, making it a self-supporting design. It allows access to all doors on both sides of an enclosure.



Option #KMD



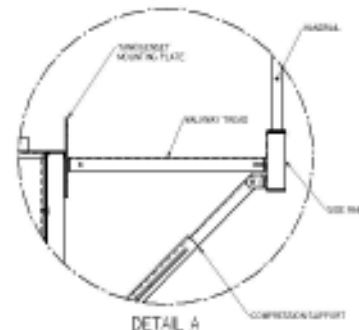
Walkaround

This dual walkway wraps around around the back of the enclosure. It allows access to all doors on both sides and one end of the enclosure. The design will depend on the tank/enclosure interface, but may require adjustable drop down supports (provided).

Option #KMWA

Required Order Information

1. LxWxH of tank
2. Tank manufacturer; serial number if Tramont tank
3. Other tank information (gusset locations, side channel description, obstructions on site, etc.)
4. Enclosure door size to determine walkway width
5. Specification option choices (frame material, tread type, tread width, handrail material, handrail configuration, overall walkway width, etc.)



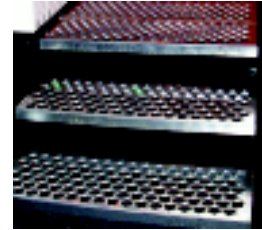
Specifications

General construction specifications apply to the series of KM Walkway models please note the model that best satisfies your application requirements and refer to the specifications within this document. Models include Staircase, Platform, Walkway, Corner Walkway, Dual Walkway and Walkaround.

1. Frame to consist of 10 gauge formed steel construction utilized in the design of the staircase, platform, walkway and walkaround. Frame design is predrilled to accept handrail mounting supports and serves as the walkway toe-board support.
2. Compression members are predrilled to connect the stairway and frame to the tank and utilize 7 gauge formed steel construction. Tanks specified with KM walkway are predrilled to accept compression members.
3. Walkway tread and stairs are available in two compositions.
 - a. Closed walkway with formed steel 12 gauge with abrasive, anti-slip tape to offer heavy-duty, high-traction surface.
 - b. Open walkway utilizing 13 gauge galvanized steel tread plates, with small raised projections and large drainage holes, to provide a non-abrasive, high-traction surface.
4. Handrails are to be a nominal 42" (1067 mm) from the walkway surface and a nominal 32" (813 mm) from the leading edge of the stair riser. Center rails are to be provided on all walkways and stair risers with vertical posts not spaced more than 8' apart. Handrails are to be available in two configurations.
 - a. Steel square 16 gauge 1.5" tubing, completely welded construction reduces installation time and offers a rigid design. Handrail upright supports are welded to the upright and easily bolted to the frame.
 - b. Aluminum 6063-T6 alloy round (1.3" OD), offers a corrosion resistant design that combines light weight with strength. Hand rail upright supports are constructed of aluminum B-535-2 alloy to offer easy installation to frame with Hex drive set screws.
5. All steel components (non-aluminum and galvanized) are to be pressure washed clean with an iron phosphate solution, and a high gloss black powder-baked paint is applied at 3 mils thickness offering a tough, scratch resistant surface.



3a



3b



4a



4b

Standards / Codes

The KM Walkway Series meets standards of OSHA 3124 – Stairways and Ladders and OSHA 1910.24 – Fixed Industrial Stairs.