



SPARE PARTS

PRODUCT GUIDE

3701 N. Humboldt Blvd.
Milwaukee, WI 53212
PH: 414.967.8800
FX: 414.967.8811
www.tramont.com

Tramont Corporation is pleased to provide you with this Spare Parts Product Guide. This guide is designed to make it easy for you to find and order the parts you need for Tramont day tanks, sub base tanks and it also lists surge tanks and battery racks. This book is for ordering parts only. If it is a complete system that you need, please consult the Tramont Day Tank, Sub Base Tank and POWERHOUSE™ Enclosure Product Guides or log on to www.tramont.com.

Standard Parts list

Day Tank Standard Parts	2
Sub Base Tank Standard Parts	2-3

Day & Sub Base Tank Spare Parts, surge tanks, battery Racks and Boxes

Gauges	3
Controls	4
Alarms & Alarm Panels	5-6
Relays & Circuit Breakers	6
Pumps & Accessories	6
Pump/Motor Combos & Remote Enclosures	7
Transformers & Motor Starters	7-8
Motors	8-9
Inspection Plate Kits	9-10

Covers	10
Fill Caps	10
Vents	10-11
Valves	11
Fuel Line Accessories	12
Pipe Accessories	12
Spill/Fill Containment	12
Immersion Heaters	13
Retrofit Kits	13-14
Surge Tanks	14
Battery Racks & Boxes	14
Paint	14

Ordering Parts

Terms & Ordering Information	1
Tramont Warranty	15

How this Book is Organized

This guide is divided into major list headings. For example, if you need a solenoid valve, look under "Valves." A complete index can be found on the facing page. A list of parts standardly included on Tramont day tanks and sub base tanks can be found on pages 2-3.

Terms and Conditions

The following terms and conditions apply to orders placed with Tramont Corporation.

- Quotations honored for 30 days from date issued.
- Payment terms net 30 days, F.O.B. Milwaukee, Wisconsin, pending credit approval by Tramont Corporation
- Visa, Mastercard and American Express accepted.
- Product design, specifications and pricing are subject to change without notice.

For More Information

For current pricing information, manuals and/or drawings please visit us at www.tramont.com or contact a Tramont customer service representative at 414.967.8800. Our knowledgeable sales and service staff will be happy to serve you.

Tramont Day Tanks, Sub Base Tanks and Gen-set Enclosures

In addition to day tanks, Tramont Corporation is a leading manufacturer of sub base tank systems and offer steel, galvaneal, and aluminum gen-set enclosures. For information on sub base tanks, see the Tramont Factory Fit™ Sub Base Product Guide. Refer to the Tramont POWERHOUSE™ Gen-set Enclosure and Tramont Load & Go Gen-set Packaging Product Guide for information on enclosure and packaging. For information on trailers refer to the Tramont POWERTRAK™ Product Guide. Complete product information is also available on the web at www.tramont.com. For assistance, contact Tramont sales and service at 414.967.8800 by phone or 414.967.8811 by fax or sales@tramont.com via e-mail.



Underwriters
Laboratories Inc.®
LISTED

Listed below are parts currently included as standard on Tramont Day Tanks. The parts on your tank may differ if optional accessories have been ordered.

Standard Day Tank Parts

TRS Series

- 216000 System 2000PLUS™ Electronic Control Module pg.4
- 216090 TRS Float Sensor pg.4
- 215780 Poly Tank Cover pg. 10
- 214080 1/3 HP, 115 VAC, 1 Phase, 60 Hz, Carbonator Mount Motor pg.8
- 214390 2 GPM, High Lift Gear Pump pg.6
- 215740 TRS Inspection Plate and Gasket pg.10

TRE Series

- 214080 1/3 HP, 115 VAC, 1 Phase, 60 Hz, Carbonator Mount Motor pg.8
- 214390 2 GPM, High Lift Gear Pump pg.6
- 216140 TRE Standard Float Switch pg.4
- 215710 TRE Inspection Plate and Gasket pg.9
- 215890 Fuel Level Gauge, Standard TRE/TRX pg.3

TRX Series

- 215720 TRX Inspection Plate and Gasket pg.9
- 215890 Fuel Level Gauge, Standard TRE/TRX pg.3
- 216260 TRX Manual Fill Cap pg.10



TRS Series Day Tanks include the System 2000PLUS™ ECM, 1/3 HP motor and 2 GPM pump as standard features. A full line of optional features are also available.

Day Tank Commonly Ordered Options

While not standardly included on day tanks, these items are commonly requested on day tank orders

- 216290 2" Mushroom Cap w/ Screen pg.10
- 216320 to 216360 Appropriately Sized Emergency Vent pg.10-11
- 216170 Fuel-in-Basin Switch pg.5

Listed below are parts currently included as standard on Tramont Sub Base Tanks. The parts on your tank may differ if optional accessories have been ordered.

Standard Sub Base Parts

TSX (Series 1000)

- 215970 Fuel Level Gauge, L-Type pg.3

Note: TSX tanks built prior to July 1998 utilized Fuel Level Gauge, Magnetic Type (215920) pg.3 Level Gauge, Magnetic-Type (215920)

TPX (Series 400)

- 215970 Fuel Level Gauge, L-Type pg.3

Vent/Fill/Alarm Options

TSX/TPX tanks don't standardly include level alarms, fill caps or vents. However, most customers ordering a TSX or TPX tank select Tramont's Vent/Fill/Alarm Package which includes:

216290 2" Mushroom Cap w/ Screen, 216320 to 216360 Appropriately Sized Emergency Vent, 216270 Raised Lockable Manual Fill Cap, 216210 Low Fuel Level Switch, 216230 Side-Mounted Float Switch (For leak detection in double-wall, open-top diked, closed-top diked and secondary containment only).

TSS (Series 1000), TPS (Series 400) day tank sub base tanks

Tramont offers sub base tanks w/ pumps, motors & controllers for pumping applications. Options standardly quoted on TSS/TPS day tank sub base tanks include:

216000	System 2000PLUS™ Electronic Control Module pg.4
108250	Sub Base Tank Sender Kit pg.4
214080	1/3 HP, 115 VAC, 1 Phase, 60 Hz, Carbonator Mount Motor pg.8
214390	2 GPM, High Lift Gear Pump, 3/8" NPT Inlet & Discharge pg.6
216190	Critical High, Emergency Shutdown pg.5
214690	1/2" NPT Solenoid Valve pg.11
215510	3/4" Fuel Strainer pg.12
216270	Raised Lockable Manual Fuel Cap pg.10
216230	Side-Mounted Float Switch pg.5 For leak detection in double-wall, open-top diked, closed-top diked and secondary containment only.
216290	2" Mushroom Cap with Screen pg.10
216320 to 216360	Appropriately Sized Emergency Vent pg.10

Gauges

215890	Fuel Level Gauge, Standard TRE/TRX Manual float-type gauge with 1 1/2" adapter. Specify tank height.
215900	Parts Kit for TRE/TRX Level Gauge Plastic cover with fuel level markings, fuel level indicator float and screw-type cap for TRE/TRX Fuel Level Gauge (215890)
215910	Fuel Level Gauge, Remote Reading, For Day Tank Electronic gauge requires customer-supplied 12/24 VDC power. 2 1/2" round, panel mount. To be used with 0-90 Ohm level sensor.
215920	Fuel Level Gauge, Magnetic-Type Manual reading fuel level gauge. Magnetic tube for sub base tank. Includes 1 1/2" NPT adapter. Specify tank height.
215930	2" Adapter for Magnetic-Type Fuel Level Gauge Used in lieu of standard 1 1/2" NPT adapter provided with Fuel Level Gauge (215920)
215940	Dial Cap for Magnetic-Type Fuel Level Gauge Replacement dial cap for Fuel Level Gauge (215920)
215950	Twin Site Sender, 0-90 Ohm For use with Fuel Level Gauge, Magnetic-Type (215920)
215960	Twin Site Sender, 240-30 Ohm For use with Fuel Level Gauge, Magnetic-Type (215920)
215970	Fuel Level Gauge, L-Type Manual reading, float type fuel level gauge for sub base tank. 1 1/2" NPT. Specify tank height.

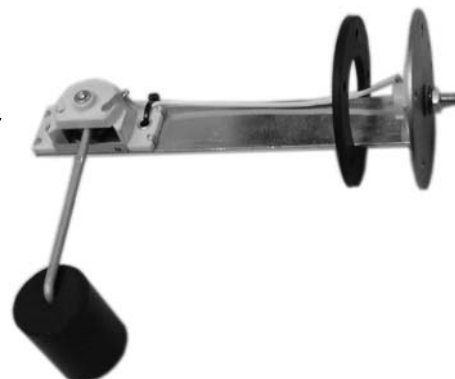


*Fuel Level Gauge,
Standard TRE/TRX
(215890)*

Controls

- 215990 System 2000PLUS™ and Bracket**
For retrofit of electromechanical ECM, TRS only.
- 216000 System 2000PLUS™ ECM**
For single supply pump/motor. TRS/TSS/TPS only.
- 216010 Duplex System 2000PLUS™ ECM**
For duplex supply pump/motor systems. TRS/TSS/TPS only.
- 216020 12 VDC System 2000PLUS™ ECM**
For single supply pump/motor. Allow 8-10 weeks for delivery.
- 216030 24 VDC System 2000PLUS™ ECM**
For single supply pump/motor. Allow 8-10 weeks for delivery.
- 216040 System 2000PLUS™ Front Panel**
For single supply pump/motor. TRS/TSS/TPS only.
- 216050 System 2000PLUS™ Rear Panel**
For single supply pump/motor. TRS/TSS/TPS only.
- 216060 Duplex System 2000PLUS™ Front Panel**
For duplex supply pump/motor. TRS/TSS/TPS only.
- 216070 Duplex System 2000PLUS™ Rear Panel**
For duplex supply pump/motor. TRS/TSS/TPS only.
- 216080 Level Modification**
Level control chip for System 2000PLUS™ ECM, modifies standard level settings for pump operation and/or warning signals. Specify levels and warnings and if ECM is single or duplex.
- 216090 Standard TRS Float Sensor**
0-90 Ohms. Specify tank height.
- 216100 Explosion-Resistant Float Sensor**
Replaces existing unit only. Specify tank height.
- 216110 Explosion-Proof Float Sensor**
Class 1, Division 1, Group D. Replaces standard TRS float switch. Explosion-proof wiring of tank may be required; consult factory.
- 108240 2" x 1 1/2" Bushing for Sender**
Drilled and tapped, screw included.
- 108250 Sub Base Tank Sender Kit**
Replaces twin site sender and magnetic gauge found on older model sub base day tanks.
- 108310 2" NPT Bushing**
Includes (2) 1/2" NPT fittings.
- 216120 Thermostatically Controlled Heater for System 2000PLUS™ ECM**
- 216130 Explosion-Proof Enclosure for System 2000PLUS™ ECM**
- 216140 TRE Standard Float Switch**
For pump/motor control. Side-mounted, 1/2 HP rated. Specify fitting size 1 1/2" or 2 1/2" NPT.
- 216150 Top Mounted Pump/Motor Float Switch**
For pump/motor control. Used with TRE double-wall tank in outdoor applications. Requires 1/8" threaded hole. Weatherproof cover (215810) may be required to weatherproof tank.
- 216160 Heavy-Duty TRE Float Switch**
Side mounted. For 3/4 and 1 HP, 120 VAC, 1 phase motors. Fits in 2 1/2" NPT. Also available for 1/3 HP motor at 12 or 24 VDC. Specify motor HP and voltage.

TRS Float Sensor (216090)



Alarms & Alarm Panels

- 216170 Fuel-In-Basin Switch, Day Tank**
Day tank only. 50-Watt float switch signals presence of fuel in containment basin. When connected to System 2000PLUS™ ECM, it will deactivate pump/motor and activate relay and LED. Specify basin height or model.
- 216180 Fuel-in-Basin Alarm with Relay**
50-Watt float switch with 10 amp relay and light for remote annunciation of fuel in containment basin. Day tank only. Specify basin height or model.
- 216190 Critical High, Emergency Shutdown**
TRS only, Isolated electrical controls activate high level alarm, stopping pump/motor for safety redundancy. Emergency shutdown overrides System 2000PLUS™ ECM. 3 amp @ 120 VAC contact relay provided for remote annunciation.

****Important Note****

Please Read Before ordering any of the Following Switches and Alarms (216200, 216210, 216220, 215680, 215690, 215700).

Standard fuel level settings ar 50% low, 95% high. Specify if different levels are required. Specify if the switch or alarm is for a day tank or sub base tank. Day tanks require a 1/8" threaded hole. Sub base tanks require a 2" NPT fitting.

- 216200 Dual Fuel Level Switch**
Two 50 watt float switches for remote annunciation of two fuel level conditions. Specify day tank or sub base and tank height. Under 10" high tank won't work.
- 216210 Low Fuel Level Switch**
50 watt float switch for remote annunciation of low fuel level. Specify day tank or sub base and tank height. Also used for top-mount leak detection on sub base tanks.
- 216220 High Fuel Level Switch**
50 watt float switch for remote annunciation of high fuel level. Also used for sub base only top mount leak detection. Specify day tank or sub base and tank height.

- 215680 Low Level Alarm and Relay**
50 watt float switch and heavy duty 10 amp relay with light for remote and local annunciation. Specify day tank or sub base and tank height.
- 215690 High Level Alarm and Relay**
50 watt float switch and heavy duty 10 amp relay with light for remote and local annunciation. Specify day tank or sub base and tank height.
- 215700 Dual Fuel Level Alarm and Relay**
Two 50 watt float switches and heavy duty 10 amp relays with lights for remote and local annunciation. Specify day tank or sub base and tank height.



*Side Mounted
Float Switch*

- 216230 Side Mounted Float Switch**
Sub base tanks only. Fits in 1/2" NPT. Used for leak detection and cut-off switch for immersion heater.
- 216240 Float Switch, Motor Control, 2-Station**
For older model "TR" day tanks.
- 215570 Remote Panel, One Alarm**
8"W x 8"L x 4"D. Wall-mounted, NEM 3R enclosure. One visual and one audible alarm (95dB@30cm), typically used for one of these functions: Fuel in containment area, low fuel level, critical low fuel level, high fuel level, critical high fuel level. Includes silence switch. Specify voltage: 12 VDC, 24 VDC, 115 VAC
- 215580 Remote Panel, Two Alarm**
Same as 215570, but with two visual and two audible alarms.
- 215590 Remote Panel, Three Alarm**
Same as 215570, but with three visual and three audible alarms.



*Two Alarm Remote
Panel (215580)*

- 215600 Remote Panel, Four Alarm**
Same as 215570, but with four visual and four audible alarms.
- 215610 Wall Mounted Audible Alarm**
UL Listed, 95dB at 10' 120 VAC standard; specify if 12 or 24 VDC is required.
- 215620 Weatherproof Alarm Horn**

****Important Note****

The following switches are for day tank or sub base tanks. They feature multiple alarms on a single stem. Specify levels, tank height and size NPT switches installed to.

- 108261 2-Level Alarm up to 24" deep tank**
- 108262 3-Level Alarm up to 24" deep tank**
- 108263 4-Level Alarm up to 24" deep tank**
- 108264 2-Level Alarm up to 36" deep tank**
- 108265 3-Level Alarm up to 36" deep tank**
- 108266 4-Level Alarm up to 36" deep tank**
- 108267 2-Level Alarm up to 50" deep tank**
- 108268 3-Level Alarm up to 50" deep tank**
- 108269 4-Level Alarm up to 50" deep tank**

Relays and Circuit Breakers

- 215630 Relay, Pump Running or Critical High** TRS/TSS/TPS only. Plug-in type for remote annunciation of pump(s) running or for Critical High Switch. 3 amp @ 120 VAC.
- 215640 Relay, Reverse Pump**
TRS only. SPST, open frame, 20amp at 120 VAC.
- 215650 Relay, Latching**
For older model "TR" tanks only. 120VAC, 11 blade w/ flanged plastic housing. Replaces mechanical latching relay on older TR-type day tanks.
- 215660 DC Circuit Breaker for System 2000**
specify 12 or 24 VDC
- 215670 AC Circuit Breaker, 1 Phase, 120VAC**

Pumps and Accessories

****Pumps listed below includes one of three mounting faces: carbonator mount, spider mount or C face. The mounting face on the motor must match the mounting face on the pump. Flow rates are based on 60 Hz. For 50 Hz. applications, flow rates are reduced 17%.****

- 214390 2 GPM Pump, Standard TRS/TRE, Carbonator Mount**
1/3HP motor. 3/8" inlet/outlet, 100psi.

- 214400 4 GPM Pump, C Face or Spider Mount**
1/3HP motor. 3/8"NPT inlet/outlet, 60psi. Specify if C face or spider mount.



- 214410 7 GPM Pump, C Face or Spider Mount**
1/3HP motor when mounted on tank, 1/3 HP motor for remote pumping applications. 1/2"NPT inlet/outlet, 40psi. Specify if C face or spider mount.

- 214420 10 GPM Pump, C Face**
Requires 1/2HP motor minimum, 3/4"NPT inlet/outlet, 40psi.

- 214430 19 GPM Pump, C Face**
Requires 1 GPM motor minimum. 3/4" NPT inlet/outlet, 40psi.

- 214440 23 GPM Pump, C Face**
Requires 1HP motor minimum. 1"NPT inlet/outlet, 30psi.

- 214450 5 GPM Prime Hand Pump**
50 Stroke piston-type.

- 214460 10 GPM Auxiliary Hand Pump**
50 stroke piston-type.

- 214470 10 GPM Rotary Hand Pump**
3/4"NPT, 115 rpm

- 214480 Pump Running Meter**
Records pump/motor hours of operation. Duplex system requires two meters.

- 214485 White Drive Coupling**
For use w/ standard 1/3HP carbonator mount motor & 2GPM pump only (214490)



Pump/Motor Combinations & Remote Enclosures

Listed below are some of the most frequently requested pump and motor combinations. If the combination you require is not shown, select pumps and motors separately in their respective sections, or contact Tramont for assistance.

- 214490** **2 GPM Pump and 1/3 HP Motor**
2 GPM Pump (214390) and 1/3 HP, 115 VAC, 1 Phase, 60 Hz Motor (214080). Standard TRS/TRE pump and motor.
- 214500** **4 GPM Pump and 1/3 HP Motor**
4 GPM Pump (214400) and 1/3 HP, 115 VAC, 1 Phase, 60 Hz Motor, spider mount (214040).
- 214510** **7 GPM Pump and 1/3 HP Motor**
7 GPM Pump (214410) and 1/3 HP, 115 VAC, 1 Phase, 60 Hz Motor, spider mount (214040).
- 214520** **7 GPM Pump and 1/2 HP Motor**
7 GPM Pump (214410) and 1/2 HP, 115 VAC, 1 Phase, 60 Hz Motor, spider mount (214160).
- 214530** **10 GPM Pump and 1/2 HP Motor**
10 GPM Pump (214420) and 1/2 HP, 115 VAC, 1 Phase, 60 Hz Motor, C Face (214140)
- 214540** **10 GPM Pump and 3/4 HP Motor**
10 GPM Pump (214420) and 3/4 HP, 115 VAC, 1 Phase, 60 Hz Motor, C Face (214240), Requires Motor Starter (214310) if used with System 2000PLUS™ ECM.
- 214551** **19 GPM Pump and 1 HP Motor**
19 GPM Pump (214430) and 1 HP, 115 VAC, 1 Phase, 60 Hz Motor, C Face (214310), Requires Motor Starter (214650) if used with System 2000PLUS™ ECM.



Step Down Transformer

- 214560** **Pump Set**
2 GPM carbonator-mount pump (214390) & 1/3 HP, 115 VAC, 1 phase, 60 Hz motor (214080) mounted on common base plate w/ cover. Includes pressure relief valve, inlet cutoff valve w/ vacuum gauge and discharge cut off valve. Illuminated "Auto-Off-Manual" switch supplied w/ NEMA 1 enclosure. All parts preplumbed & wired.
- 214570** **Duplex Pump Set**
Same as 214560, but two of each components on a common base
- 214580** **Remote Enclosure Kit**
12" x 24" common base with standard poly cover for remote mounting of pump/motor. Consult factory if motor is larger than 1/3 HP.
- 214590** **Duplex Remote Enclosure Kit**
24" x 24" common base with steel cover for remote mounting of duplex pump/motor. Consult factory if motors are larger than 1/3 HP.

Transformers & Motor Starters

- 214600** **Step Down Transformer**
1/4 kVA, 240/480 VAC, 50/60 Hz. Used to power ECM only; motor requires separate power line and Motor Starter (214650) or (214660).
- 214610** **Step Down Transformer**
1 kVA, 240/480 VAC, 50/60 Hz. Used to power ECM and standard 1/3 HP motor.
- 214620** **Step Down Transformer**
1 kVA, 120/208 VAC, 50/60 Hz. Use to power ECM and standard 1/3 HP motor.
- 214630** **Step Down Transformer**
2 kVA, 240/480 VAC, 50/60 Hz. Used to power ECM and two 1/3 HP motors in duplex applications.
- 214640** **Step Down Transformer**
1 kVA export version.
190/200/208/380/400/415/440 VAC, 50/60 Hz. Motor Starter (214650 or 214660) required for larger motors.

- 214650 Single Phase Magnetic Motor Starter**
Overload protection for 115 and 230 VAC motors. Specify motor voltage and HP.
- 214660 Three Phase Magnetic Motor Starter**
Overload protection for 230 and 460 VAC motors. Specify motor voltage and HP.
- 214670 Single Phase Magnetic Motor Starter w/ HOA Switch**
Same as 214650, with "Hand-Off-Auto" selector switch.
- 214680 Three Phase Magnetic Motor Starter w/ HOA Switch**
Same as 214660, with "Hand-Off-Auto" selector Switch.



Pump face From Left to Right: Carbonator Mount, C Face Mount, Spider Mount

Motors

Important Notes:

1. Motors listed include one of three pump mounting faces; carbonator, spider, or C face. The mounting face on the motor must match the mounting face on the pump. If you do not see the motor you need, consult factory.

2. Specify motor voltage if more than one voltage is indicated in description.

3. 208-230/460 VAC motors and 3/4 HP and above motors require motor starter if used with System 2000PLUS™ Electronic Control Module, and may require 120 VAC transformer or other accessories. If you are selection one of these motors and it is not a replacement for and identical unit, consult factory.

4. 60 Hz motors operate at 1725 RPM. 50 Hz motors operate at 1425 RPM, decreasing pump output by 17%

Motors 1/3 HP

- 214010** 1/3HP, 12VDC, TENV Motor, C Face
- 214020** 1/3 HP, 24-28 VDC Motor, C Face
- 214030** 1/3 HP, 115/208-230 VAC, 1 Phase, 60 Hz ODP Motor, C Face
- 214040** 1/3 HP, 115/208-230 VAC, 1 Phase, 60 Hz, ODP Motor, Spider Mount
- 214050** 1/3 HP, 115/208 VAC, 1 Phase, 60 Hz, TEFC Motor, C Face
- 214060** 1/3 HP, 115/208/230 VAC, 1 Phase, 60Hz, Explosion-Proof Motor, C face
- 214070** 1/3 HP,, 110/220 VAC, 1 Phase, 50 Hz, TEFC Motor, C Face
- 214071** 1/3 HP, 110/220 VAC, 1 Phase, 50/60 Hz, ODP Motor, Carbonator Mount.

- 214080** 1/3 HP, 115 VAC, 1 Phase, 60 Hz, Standard TRS/TRE ODP Motor, Carbonator Mount.
- 214090** 1/3 HP, 208-230/460 VAC, 3 Phase, 50/60 Hz ODP Motor, C Face
- 214100** 1/3 HP, 208-230/460 VAC, 3 Phase, 50/60 Hz TEFC Motor, C Face
- 214110** 1/3 HP, 115 VAC, 3 Phase, 50/60 Hz, Explosion-Proof Motor, C Face

Motors 1/2 HP

- 214120** 1/2 HP, 12 VDC, TENV Motor, C Face
- 214130** 1/2 HP, 24 VDC, TENV Motor, C Face
- 214140** 1/2 HP, 115/208-230 VAC, 1 Phase, 60 Hz, ODP Motor, C Face

Motors 1/2 HP continued

214150	1/2HP, 115/208-230VAC, 1Phase, 60Hz, ODP Motor, Carbonator Mount
214160	1/2 HP, 115/208-230 VAC, 1 Phase, 60 Hz, ODP Motor, Spider Mount
214170	1/2 HP, 115/208-230 VAC, 1 Phase, 60 Hz, TEFC Motor, C Face
214180	1/2HP, 115/208-230VAC, 1Phase, 60Hz, Explosion-Proof Motor, C Face
214190	1/2 HP, 110/220 VAC, 1 Phase, 50 Hz, ODP Motor, C Face
214200	1/2 HP, 110/220 VAC, 1 Phase, 50 Hz, TEFC Motor, C Face
214210	1/2 HP, 208-230/460 VAC, 3 Phase, 50/60 Hz, ODP Motor, C Face
214220	1/2 HP, 208-230/460 VAC, 3 Phase, 50/60 Hz, TEFC Motor, C Face
214230	1/2HP, 208-230/460VAC, 3Phase, 50/60Hz, Explosion-Proof Motor, C Face

Motors 3/4 HP

214240	3/4HP, 115/208-230 VAC, 1 Phase, 60Hz, ODP Motor, C Face
214250	3/4 HP, 115/208-230 VAC, 1 Phase, 60 Hz, TEFC Motor, C Face
214260	3/4HP, 115/208-230 VAC, 1 Phase, 60Hz, Explosion-Proof Motor, C Face
214270	3/4 HP, 110/220 VAC, 1 Phase, 50 Hz, TEFC Motor, C Face
214280	3/4 HP, 208-230/460 VAC, 3 Phase, 50/60 Hz, ODP Motor, C Face
214290	3/4 HP, 208-230/460 VAC, 3 Phase, 50/60 Hz, TEFC Motor, C Face
214300	3/4HP, 208-230/460VAC, 3 Phase, 50/60Hz, Explosion-Proof Motor, C Face

Motors 1 HP

214310	1 HP, 115/208-230 VAC, 1 Phase, 60 Hz, ODP Motor, C face
214320	1 HP 115/208-230 VAC, 1 Phase, 60 Hz, TEFC Motor, C Face
214330	1 HP, 115/208-230 VAC, 1 Phase, 60 Hz, Explosion-Proof Motor, C-Face
214340	1 HP, 110/220 VAC, 1 Phase, 50 Hz, TEFC Motor, C Face
214350	1 HP, 208-230/460 VAC, 3 Phase, 50/60 Hz, ODP Motor, C Face
214360	1 HP, 208-230/460 VAC, 3 Phase, 50/60 Hz, TEFC Motor, C Face
214370	1 HP, 208-230/460 VAC, 3 Phase, 50/60 Hz, Explosion-Proof Motor, C-Face



2 GPM 1/3 HP Motor

Inspection Plate Kits

Important Note

Inspection plates cover 4 1/2" square opening on the top of Tramont day tanks. Consult factory if inspection plate required is not listed.

215710	Inspection Plate Kit, TRE Standard Includes 1 1/2" NPT for level gauge, mounting screws, gasket
215720	Inspection Plate Kit, TRX Standard Includes 1 1/2" NPT for level gauge, 2 1/4 fill for bayonet cap, mounting screws, gasket
215730	Inspection Plate, TRX, 2" NPT Fill Includes 1 1/2" half coupling for level gauge, 2" NPT fuel fill for lockable cap, mounting screws, gasket

215740 Inspection Plate, TRS Standard
Includes opening for TRS float sensor, mounting screws, gasket

215750 Inspection Plate, TRS Retrofit
For TRX/TRE to TRS conversion. Allows mounting of System 2000PLUS™ ECM and TRS float sensor. Includes mounting screws, gasket

215760 Solid Inspection Plate
No openings; completely blocks inspection port. Includes mounting screws, gasket.

215770 Inspection Plate Gasket
Fits all standard Tramont inspection plates.

Covers

215780 Standard Poly TRS Cover
Includes opening for System 2000PLUS™ ECM. For standard pumps & motors up to 7GPM, 1/2HP (214520)

215790 Poly TRS Cover, No ECM Opening
Solid cover, no opening for System 2000PLUS™ ECM. For standard pumps and motors up to 7GPM, 1/2 HP (214520)

Important Note

Additional options to Weatherproof Cover may be required to completely weatherproof tank.

215800 Weatherproof Cover for Single Pump/Motor, TRS Only
For standard pumps and motors up to 7 GPM, 1/2HP (214520)

215810 Weatherproof Cover for Single Pump/Motor, TRE Only

215820 Vertical Weatherproof Cover for the Dual Pump/Motor
Steel cover, 16"H x 24 1/4"W x 13 1/4"D. For standard 1/3HP motor, 2GPM pump only (214490)

215830 Horizontal Weatherproof Cover for Dual Pump/Motor
Steel cover, 10"H x 24 1/4"W x 19 1/4"D. For standard pumps and motors up to 7 GPM, 1/2HP (214520)

215840 Duplex Cover, Vertical Pumps
Steel, non-weatherproof cover. For standard 1/3HP motor, 2GPM pump only. (214490)

215850 Duplex Cover, Horizontal Pumps
For standard pumps and motors up to 7 GPM, 1/2HP (214520)

Fill Caps

216260 TRX Manual Fill Cap
Quarter-turn bayonet style cap, standard on TRX

216270 2" NPT Lockable Manual Fill Cap
For day or sub base tanks with 2"NPT fill

Vents

Important Note when Ordering Vents

Vent sizing isn't determined by tank volume. Capacities shown are guidelines only. Unless the item you are ordering is a replacement for an existing vent on a Tramont tank, consult factory.

216280 1 1/4" NPT Mushroom Cap w/ Screen
Atmospheric mushroom cap w/ screen.

216290 2" NPT Mushroom Cap w/ Screen
For atmospheric venting. Standard normal vent on all day and sub base tanks to 3500 gal. Consult factory if ordering on normal vent larger sub base tanks.

216300 3" NPT Mushroom Cap w/ Screen
For atmospheric venting.

216310 4" NPT Mushroom Cap w/ Screen
For atmospheric venting.

216320 2" NPT Emergency Pressure Relief Vent
For venting NFPA emergency vents. Male thread, pressure set at 8oz./sq.in. Estimated 10-75gal. tanks.

216330 3" NPT Emergency Pressure Relief Vent
For venting NFPA emergency vents. Male thread, pressure set at 8oz./sq.in. Estimated 76-200 gal. tanks.

216340 4" NPT Emergency Pressure Relief Vent
For venting NFPA emergency vents. Male thread, pressure set at 8oz./sq.in. Estimated 201-550 gal. tanks.



216350 5" NPT Emergency Pressure Relief Vent
For venting NFPA emergency vents. Male thread, pressure set at 8oz./sq.in. Estimated 551-1500 gal. tanks.

216360 6" NPT Emergency Pressure Relief Vent
For venting NFPA emergency vents. Male thread, pressure set at 8 oz./sq.in. Estimated 1501-3000 gal. tanks.

216370 Top-Mounted Vent Whistle
Installed within 1 1/4" NPT normal vent fitting. Must be installed on top of tank.

Valves

108100 Ball Valve, 3/8" NPT

108110 Ball Valve, 1/2" NPT

108120 Ball Valve, 3/4" NPT

108130 Ball Valve, 1" NPT

108140 Check Valve, 3/8" NPT

108150 Check Valve, 1/2" NPT

108160 Check Valve, 3/4" NPT

108170 Check Valve, 1" NPT

108180 Fuseable Link Valve, 3/4" NPT
Closes at 165° F.

108190 Fuseable Link Valve, 1" NPT
Closes at 165° F.

108200 Foot Valve, 1 1/2" NPT
For installation in main tank to maintain prime supply line. Enters 3" NPT.

108210 Foot Valve, 1" NPT
For installation in main or day tank to maintain prime supply line. Enters 2" NPT. Removable dip tube required if used in day tank.

108220 Foot Valve, 3/4"NPT
For installation in main tank to maintain prime supply line.

108230 Float Valve, 1/2"NPT, TRX Only
For gravity fill applications

Important Note

When ordering solenoid valves, Specify voltage where appropriate. A 100 mesh strainer (215510 - 215530) is required to prevent containment of the valve and to ensure proper closure.

214990 Solenoid Valve, 120 VAC, 3/8" NPT
Normally closed, 4 GPM max.

214690 Solenoid Valve, 120 VAC, 1/2" NPT

214920 Solenoid Valve, Manual Override, 120 VAC, 1/2" NPT
Normally closed, 4 GPM max.

214770 Solenoid Valve, DC System, 1/2" NPT
Specify 12 or 24 VDC. Normally closed, 4 GPM max.

214730 Solenoid Valve, 120 VAC, 3/4" NPT
Normally closed, 10 GPM max.

214950 Solenoid Valve, Manual Override, 120 VAC 3/4" NPT
Normally closed, 10 GPM max.

214740 Solenoid Valve, DC system, 3/4" NPT
Specify 12 or 24 VDC. Normally closed, 10 GPM max.

214830 Solenoid Valve, 120 VAC, 1" NPT
Normally closed, 23 GPM max.

214870 Solenoid Valve, Manual Override, 120 VAC, 1" NPT
Normally closed, 23 GPM max.

214790 Solenoid Valve, DC System, 1" NPT
Specify 12 or 24 VDC. Normally closed, 23 GPM max.

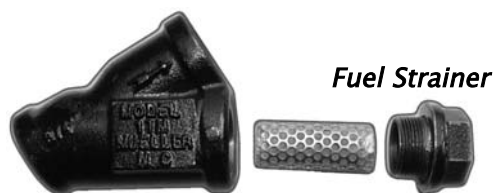
214900 Solenoid Valve, 120 VAC, 2" NPT
Normally open, 85 GPM max.

214910 Solenoid Valve, DC System, 2" NPT
Specify 12 or 24 VDC. Normally open, 85 GPM max.



Fuel Line Accessories

- 215480 Fuel Filter, 3/4" NPT**
4 GPM, 25 micron.
- 215490 Fuel Filter, 1 1/4" NPT**
10 GPM, 25 micron.
- 215500 Fuel Filter Coalescer, 1" NPT**
3 GPM, 10 micron.
- 215510 Fuel Strainer, 3/4" NPT**
23 GPM, 100 mesh
- 215520 Fuel Strainer, 1" NPT**
25 GPM, 100 mesh
- 215530 Duplex Fuel Strainer, 3/4" NPT**
23 GPM, 100 mesh
- 215540 In-Line Flame Arrestor, 1 1/4" NPT**
- 215550 Pressure Gauge**
Pump outlet 0-30 psi.
- 215560 Vacuum Gauge**
Pump inlet 0-30 in. Hg (mercury).



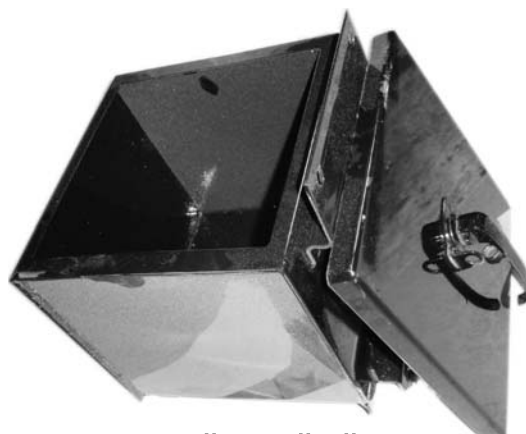
Pipe Accessories

- 108000 3/8" NPT Pipe Plug**
- 108010 1/2" NPT Pipe Plug**
- 108015 3/4" NPT Piipe Plug**
- 108020 1" NPT Pipe Plug**
- 108030 1 1/4" NPT Pipe Plug**
- 108040 2" NPT Pipe Plug**
- 108050 3" NPT Pipe Plug**
- 108060 4" NPT Pipe Plug**

- 108070 5" NPT Pipe Plug**
- 108080 6" NPT Pipe Plug**
- 109090 Removable 1" Supply Dip Tube**
Mounts in 2" NPT. Includes 1 1/2" double-tap bushing. Specify tank height.
- 108260 Side-Mount Reverse Pump Dip Tube**
For day tanks only. Includes 1" Remke cord grip, 3/8" x 3 1/2" pipe, 3/8" x 6" pipe, 3/8" 90° street elbow and 3/8" full coupling.

Spill/Fill Containment

- 215440 5 Gal. Spill/Fill Containment**
14 1/8"H x 12 1/4"L x 12 1/4"W
- 215450 Remote 5 Gal. Spill/Fill Containment w/ Wall Mount Brackets**
- 215460 5 Gal. Spill/Fill Containment, Stainless Steel**
14 1/8"H x 12 1/4"L x 12 1/4"W
- 215470 Remote 5 Gal. Spill/Fill Containment, Stainless Steel w/ Wall Mount Brackets**
- 214451 7 1/2 Gal. Spill/Fill Containment**
14 5/8"H x 13 1/2"L x 13 1/2"W



5 Gallon Spill Fill Containment

Immersion Heaters

Important Note

Immersion heaters are for replacement of existing units only. If you need to replace the immersion heater cut-off switch, see Side-Mounted Float Switch (216230)

- 215040** **150 Watt Immersion Heater**
For TRS/E/X-10,15. 1 phase, 120 VAC
- 215050** **300 Watt Immersion Heater**
For TRS/E/X-25. 1 phase, 120 VAC.
- 215060** **1000 Watt Immersion Heater**
For TRS/E/X-50 thru 75 and
TSX/TPX/TSS/TPS- 10 thru 75. 1 phase,
120 VAC.
- 215070** **2000 Watt Immersion Heater**
For TRS/E/X-100 thru 200, and
TSX/TPX/TSS/TPS-100 thru 150. 1
phase, 120 VAC.
- 215080** **2000 Watt Immersion Heater**
For TRS/E/X-100 thru 200. 1 phase, 208
VAC.
- 215090** **3000 Watt Immersion Heater**
For TRS/E/X-275 thru 400, and
TSX/TPX/TSS/TPS-200 thru 350. 1
phase, 240 VAC.
- 215100** **3000 Watt Immersion Heater**
For TRS/E/X-275 thru 400. 1 phase, 480
VAC.
- 215110** **3500 Watt Immersion Heater**
For TRS/E/X-350 thru 500. 1 phase, 208
VAC.
- 215120** **4000 Watt Immersion Heater**
For TRS/E/X-450 thru 600,
TSX/TPX/TSS/TPS-400 thru 600. 1
phase, 240 VAC.
- 215130** **4500 Watt Immersion Heater**
For TRS/E/X-450 thru 600. 1 phase, 208
VAC.
- 215140** **4000 Watt Immersion Heater**
For TRS/E/X-450 thru 600. 1 phase, 277
VAC.
- 215150** **4000 Watt Immersion Heater**
For TRS/E/X-450 thru 600. 3 phase, 208
VAC.



Important Note

Consult factory for contractor box voltages other than 120 VAC or 240 VAC

- 215160** **Contactor Box for Immersion Heater**
120 VAC
- 215170** **Contactor Box for Immersion Heater**
240 VAC

Retrofit Kits

- 215410** **Add Reverse Pumping System to TRS**
Includes remote base with poly cover for pump and motor, electrical box and 20 amp motor control relay, 1/3 HP, 1 phase, 60 Hz motor, 2 GPM pump, critical high fuel level shutdown, 3/8" dip tube, 3/8" check valve, inspection plate and gasket.
- 215420** **Add Duplex Pumping System to TRS**
Includes duplex System 2000PLUS™ ECM, one 1/3 HP, 1 phase, 60 Hz motor, one 2 GPM pump, pump running relay, two 3/8" check valves, remote base with poly cover for single pump and motor.
- 215430** **Convert TRE to TRS**
Includes duplex System 2000PLUS™ ECM, TRS float sensor, inspection plate and gasket, plug for side-mounted TRE float switch fitting. Specify tank height.
- 215360** **Convert TRE to Duplex TRS**
Includes duplex System 2000PLUS™ ECM and mounting bracket, TRS float sensor, one 1/3 HP, 1 phase, 60 Hz motor, one 2 GPM pump, pump running relay, two 3/8" check valves, remote base with poly cover for single pump and motor. Specify tank height.
- 215380** **Convert TR to TRS**
Includes System 2000PLUS™ ECM and mounting bracket, TRS float sensor, inspection plate and gasket. Specify tank height.

215390

Convert TSX/TPX to TSS/TPS

Includes System 2000PLUS™ controller, remote base with poly cover for single pump and motor, 0-90 Ohm twin site sender kit (215950), Magnetic fuel level gauge (215920), 1/3 HP, 115 VAC, 1 phase, 60 Hz Motor, 2 GPM pump and critical high level switch. Tank requires 1 1/2" NPT for replacement gauge, 2" NPT for supplied 2" x 1/2" x 1/2" , with 7" dip tube, double tap bushing for tank fill and overflow back to main tank, 1 1/4" - 2" NPT for critical high switch. (Specify fitting size available) (Specify tank height)

215400

Add Reverse Pump to TSS/TPS

Includes remote base with poly cover for single pump and motor, 20 amp motor control relay, 1/3 HP, 115 VAC, 1 phase, 60 Hz motor, 2 GPM pump, critical high level switch, 1/2" NPT check valve, 3/8" NPT dip tube for overflow to be installed in 3/4" NPT fitting. (Consult factory to properly size reverse dip tube)

Surge Tanks

*****Important Note*****

All surge tanks include sight glass

215180 2 1/2 Gal. Horizontal Surge Tank

215200 8 Gal. Horizontal Surge Tank

215210 15 Gal. Horizontal Surge Tank

215220 18 Gal. Horizontal Surge Tank

215230 24 Gal. Horizontal Surge Tank

215240 40 Gal. Horizontal Surge Tank

215250 Surge Tank Feet, Set of Two

215260 **Low Level Warning**

Remote only. separate float switch activates a 10 amp contact relay for remote annunciation.

Battery Racks & Boxes

215270 Rack, 6 1/2" x 13 1/2"

215280 Rack, 9 1/2" x 29"

215290 Rack, 7 1/2" x 14"

215300 Rack, 9 1/2" x 14"

215310 Rack, 12" x 21 1/2", one 4D or 8D

215320 Rack, 12" x 42 1/2", Two 4D or 8D, End to End

215330 Rack, 23" x 21 1/2", Two 4D or 8D, Side by Side

215340 Box, 12"W x 23"L x 12"H, One 4D or 8D

215350 Box, 12"W x 44"L x 12"H, Two 4D or 8D

Paint

214380

Touch-Up Spray Paint Can

12.8 oz. can. Available in gloss black, gray (standard tank color) and most major gen-set manufacturer colors. Specify color.

Tramont Warranty

Tramont Corporation warrants its products against defects in material or workmanship under normal use and service for a period of 12 months from date of shipment from its plant in Milwaukee, Wisconsin. All obligations and liabilities under this warranty are limited to repairing or replacing at our option F.O.B. Milwaukee, Wisconsin of such allegedly defective units or parts returned, carrier charges prepaid. No liability is accepted for consequential damage or reinstallation labor. Warranty on accessories furnished by other manufacturers shall be limited by those manufacturers' warranties. If field service, at the request of the Buyer, is rendered and the fault is found not to be with Tramont Corporation product, the Buyer shall pay the time and expense of the Tramont Field Representative. Bills for service, labor or other expenses that have been incurred by the Buyer, their customer or agent will not be accepted. Warranty does not cover failure resulting from improper installation or use. Changes or repairs made in the field without authorization from Tramont Corporation will void this warranty.

To place an order or for pricing information log on to www.tramont.com or contact Tramont sales and service at 414.967.8800 by phone or 414.967.8811 by fax or sales@tramont.com via e-mail.