

**TRAMONT**<sup>™</sup>  
a UCA Group Company



**What you want  
When you want it  
No surprises**



**POWERHOUSE<sup>™</sup> Enclosures  
Genset Packaging Solutions**

## POWERHOUSE<sup>TM</sup> Enclosures and Genset Packaging Solutions

Tramont is an industry leader in genset Enclosure design and construction. We have the knowledge, experience and resources to deliver a complete, competitively priced, ready-to-install package that includes your genset, Enclosure, Sub Base Tank other components.

### Proven design, quality construction

Tramont has designed and built *thousands* of Enclosures. We incorporate the right mix of standard and optional features to deliver a cost-effective Enclosure that meets the needs of your application. Tramont's engineering team will design the Enclosure to meet your specification, including dBA requirements on sound-attenuated units.

### Enclosures

Enclosures are designed and constructed to meet your structural, performance and dimensional requirements.

**Weather-Protective Enclosures:** Help protect your genset from the elements and unauthorized access.

**Sound-Attenuated Enclosures:** Reduce sound output, help protect the genset and prevent unauthorized access.

### Standard features

**Construction:** All Tramont Enclosures utilize sheet metal construction with stainless steel hinges and latches, aluminum and stainless steel hardware.

- **Steel:** Offers strength and rigidity. Suitable for most indoor and outdoor applications.
- **Galvaneal:** A thin layer of annealed zinc is fused to the steel surface. Strength of steel with additional rust and corrosion resistance.
- **Aluminum:** High level of corrosion resistance. Often specified for locations with extreme humidity or exposure to salt spray.
- **Stainless steel:** Strength of steel, plus superior corrosion resistance. Standard material is 304 stainless.

**Powder coated:** Electrostatically applied, baked on power paint is more durable and weather resistant than wet process paint.

- Textured matte finish, optional gloss.
- Thirteen standard colors. Selection includes all major domestic generator manufacturers. Custom colors available.



From top: Weather-Protective Sub Base Tank/Enclosure Package. Sound-Attenuated Enclosure package ships from Tramont's manufacturing and packaging facility.



Left: All Tramont Enclosures receive a durable powder coat finish. Right: Enclosure powder coated in Oxide Red, one of 13 standard color selections.

## Standard features

**Drip rails over doorways:** Helps direct water away from openings.

**Acoustic foam liner:** Reduces noise output on Sound-Attenuated Enclosures. Material thickness varies based on requirements.

**Roof pitch 2" from center point to edge:** Directs water off top of Enclosure.

**Stainless steel hinges and latches:** Helps prevent rust and corrosion.

**Gasketed access doors:** Reduces water infiltration, minimizes noise.

**Lockable door handles:** Recessed design keeps handles flush with Enclosure surface.

## Option

Frequently ordered options include:

**Inlet/outlet access panels:** Easy maintenance of optional hoods.

**Louvers and dampers:** Motorized or gravity.

**Lighting:** Multiple inside and outside options including fluorescent, incandescent, DC, emergency, exterior with photo cell and strobe lights.

**Perforated lining:** Galvanized steel or aluminum protective covering for interior foam insulation.

**Internal door release:** Allows exit from locked enclosure.

**Viewing window:** Control panel visibility.

**Heater:** Helps maintain ambient temperature.

**Door holders:** Secures open doors in place.



*Left: Acoustic foam, visible on inside door panel, reduces noise output on Sound-Attenuated Enclosures. Right: Motorized louvers, visible before addition of intake hood.*

## Custom projects, big jobs

Tramont has the ability to take on Enclosure projects with special design, performance, material and construction requirements. As standby power capacity needs have increased, generators - and therefore Enclosures - have also grown in size. Tramont can handle virtually any size Enclosure requirement.

## International Building Code Certification and Wind Rating:

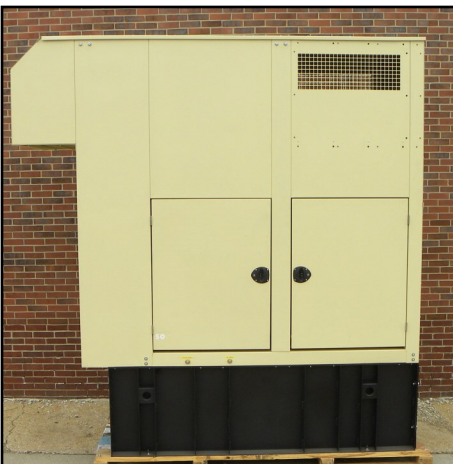
Enclosures, tanks and lift bases can be designed and built to meet IBC and Wind Rating requirements in areas subject to seismic activity and severe weather.



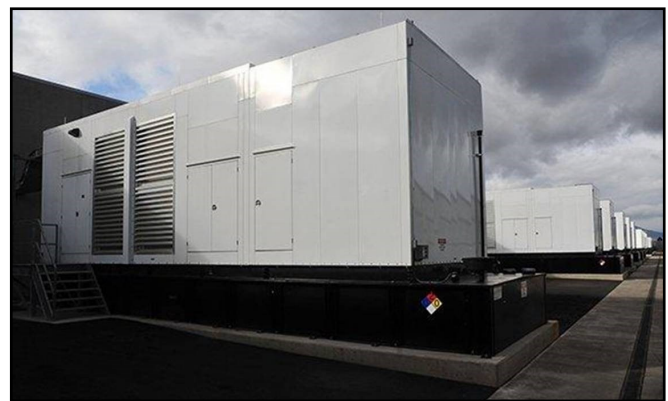
*Left: Sound-Attenuated Enclosures with mil spec paint finish.*



*Right: 50-foot-long Sound-Attenuated Enclosure Package mounted on lifting base departs Tramont.*



*Left: Sound-Attenuated Enclosure with custom-designed, raised snow hood.*



*Right: A line of Weather-Protective Enclosure Packages at a major data center.*

## Genset Packaging

Genset packaging can get complicated. Major components like Sub Base Tanks, Enclosures and Walkways have to be correctly designed and built, and then seamlessly integrated into a package that meets your specification. It has to be delivered where and when you want it. Tramont offers a wide range of packaging capabilities, from simply mounting your generator to a tank, to delivering a complete, fully customized package incorporating multiple elements.

### Load & Go™

With our **Load & Go** program, you send us your open or enclosed genset. We will mount it on a Tramont Sub Base Tank, and then ship it to your destination. It's a fast, simple way to deliver a ready-to-install package to the job site.

### Custom packages

Tramont also develops highly customized packages. Our Sales and Engineering teams work closely with you to ensure that the final product meets the needs and expectations of you and your end user. We design/build components that are integrated with your genset, including **Enclosures, Sub Base Tanks, Lift Bases, Trailers, Day Tanks and Elevated Access**. Standard packaging features include ducting of the radiator, extension of coolant and oil drains, and interior or exterior exhaust. We can also incorporate an extensive list of Tramont or customer-provided components and services, including:

- Walk-in Enclosure
- Basic electrical and lighting package
- Load center
- Panel board
- Breaker
- Transformer
- Enclosure heater
- Neutral Grounding Resistor (NGR)
- Emergency stop
- Mount and wire customer-provided batteries and/or battery charger/best battery selector switch
- Automatic transfer switch
- Internally mounted Day Tank
- Skid-resistant diamond plate floor (on tank or lift base)

### Tell us what you need, we'll build the package

No project is too small or too large. The same craftsmanship and attention to detail goes into every package regardless of its size or complexity.

### Contact Tramont

If you would like a quotation, have questions on your Enclosure, Enclosure package or any other Tramont products, contact the Tramont Sales and Service Team at the phone number and email address below.



*Above: Load & Go packages assembled at Tramont .*



*Enclosure Package readied for shipment.*



*Enclosure Package mounted on Trailer with integral Sub Base Tank.*



*Walkway and Platform installed on Enclosure Package.*

Tramont Manufacturing LLC • 3637 N. Holton St., Milwaukee, Wisconsin USA 53212  
Phone: 414-967-8800 • Fax: 414-967-8811 • sales@tramont.com • www.tramont.com